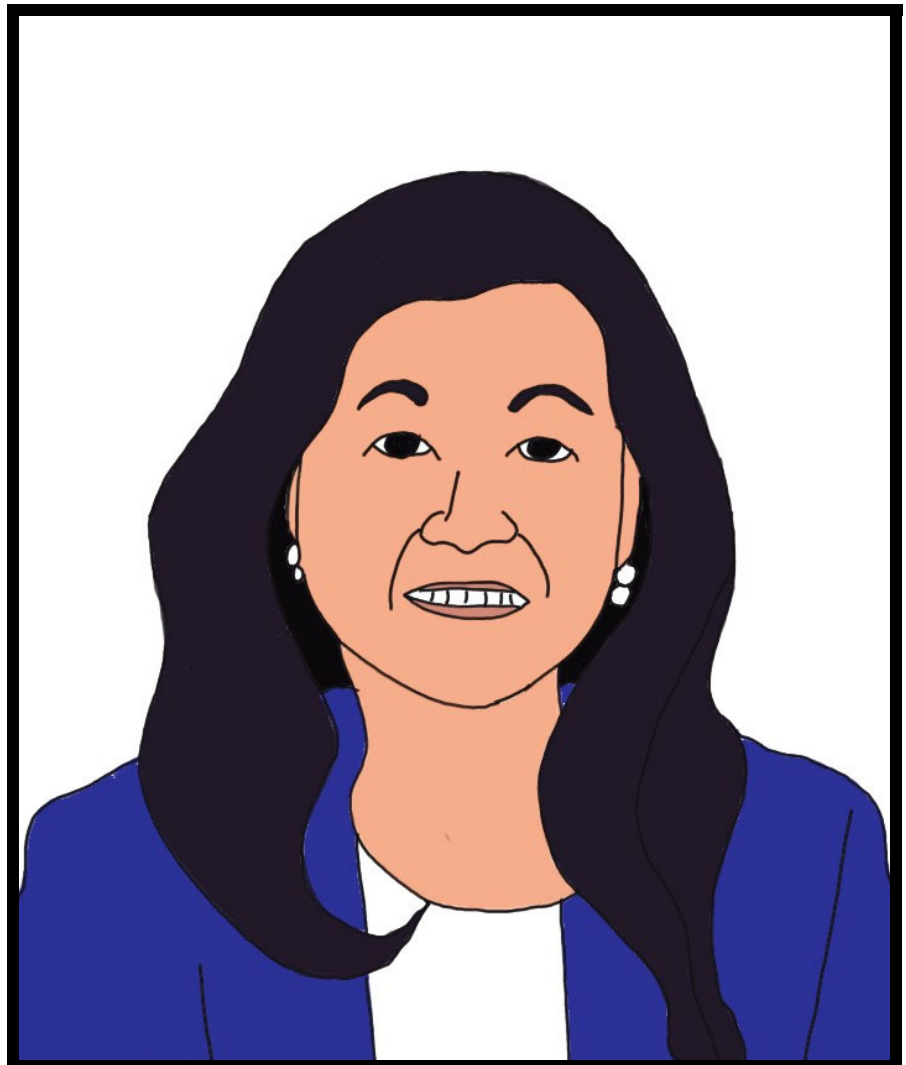
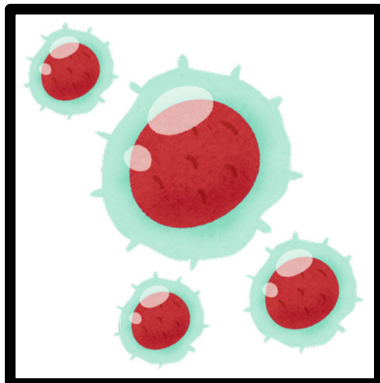


**Ann S. Tsukamoto
Weissman**
(b. July 6, 1952)

**Stem Cell
Researcher**

Japanese American
Place of Birth: California
Invention: Process to
Isolate Blood Stem Cells



Lindsey Lee (SFSU 2025)

Ann was the second of five children and the first in her family to go to college. She received her PhD in Immunology and Microbiology from the University of California, Los Angeles. In 1990, Ann and her husband Irving Weissman discovered and patented a process to isolate human blood stem cells. It enabled bone marrow transplants, helping with metastatic breast and blood cancer treatments. Ann's later inventions and thirteen patents provided the foundations to help with spinal cord injury, Alzheimer's disease, and Parkinson's disease. Her work has influenced advancements in gene therapy and tissue engineering.