

Alice Min Soo Chun

(b. 1975)

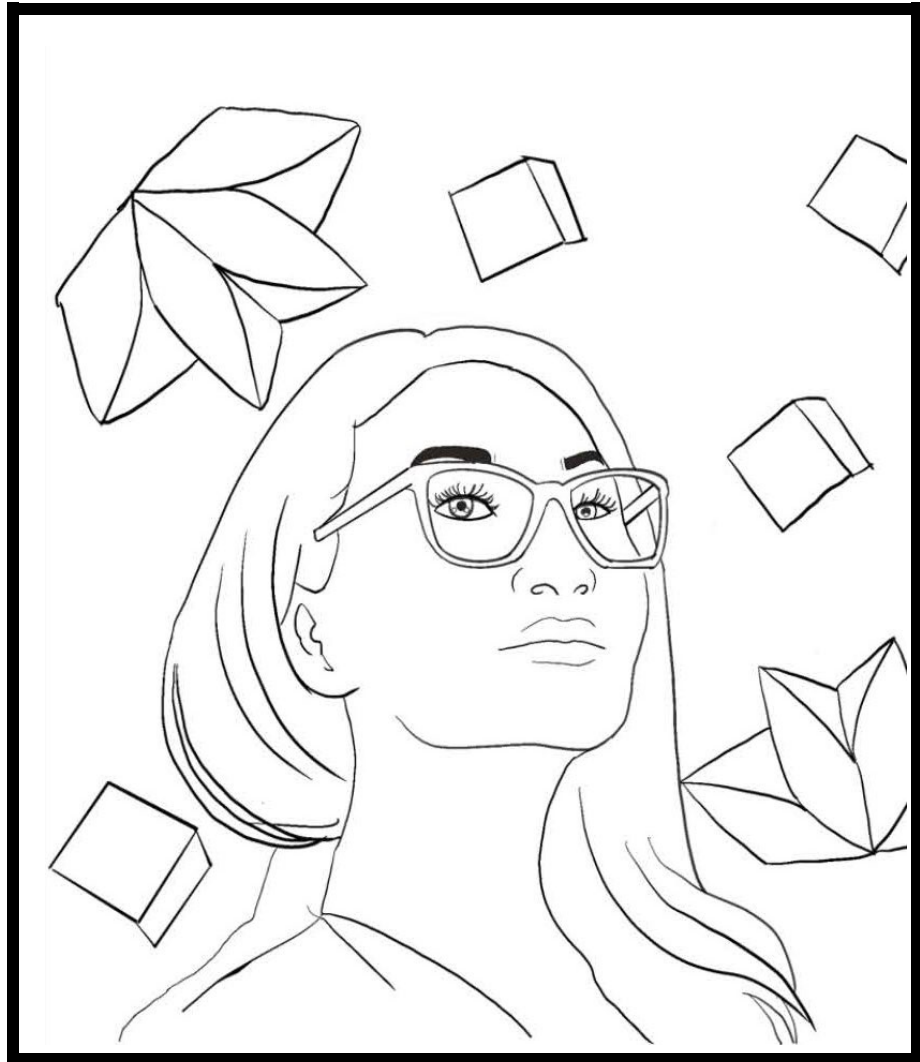
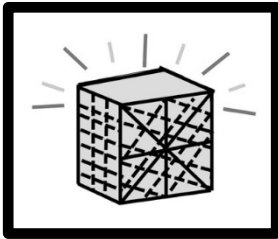
Entrepreneur

Korean American

Place of Birth:

Seoul, South Korea

Invention: SolarPuff



Brittany Sumpter (SFSU 2025)

Alice grew up between South Korea and upstate New York. Having always been fascinated by structure and design, she earned degrees in architecture and later became a professor in architecture and material technology at Columbia University. With her passion for material technology trends and wanting to help the underserved and her son's asthma, Alice began focusing on solar technology. Her most well-known and patented invention is the SolarPuff, a self-inflatable, portable solar-powered LED lantern for camping, emergencies, and ambient settings. It has impacted over one million people worldwide. In 2015, Alice launched Solight Design, and has won numerous awards, including the US Patent Award for Humanity.